



AUTOMOTIVE INDUSTRY

[www.tfdindustry.com](http://www.tfdindustry.com)

SEMI TRAILER & TRAILER SPARE PARTS

**1FD**  
AUTOMOTIVE INDUSTRY



**TIPPER TRAILER**

**LIGHT, AESTHETIC, STEEL**



## TECHNICAL SPECIFICATIONS TIPPER TRAILER ( HALF PIPE)

**UPPER STRUCTURE :** Body of U-shape tipper trailer is made of high quality steel which had 450 HB hardness and durable against corrosion and impacts. Base of trailer is made of HARDOX 450 and 5 mm thickness. Front wall and rear cover are produced with St 52 A 1 quality steel. Rear cover is automatically open when the tipper moves upward.

**CHASSIS :** Chassis reinforced I section traverses from imported DOMEX. During production, Laser measurement devices are using for minimize any production problems.

**HYDRAULIC SYSTEM :** We are using HIDROMAS telescopic lifts for tipping which is moving upward 45 degrees and 5 stages. Hydraulic tank with suction filtered, tipper is pneumatically controlled, and secured by double speed downward valve. Connection between trailer to tow truck is supplying by two jack.

**SUSPENSION AND AXLES :** All of them having a folding top suspensions and parabolic double layered Z type scissors which are AKTAS brand . 3 axles each with 9 tons capacity with domestic or imported drum or disc brake. As a local axles SERTEL brand is choosen, for imported brand both BPW or SAF can be choosen.

**BRAKE SYSTEM :** Double-circuit braking system in line with EU directives. WABCO EBS and RSS system with 2S2M electronic anti-blockage system. Emergency stop and ramp valve

**ELECTRICAL SYSTEM :** 7 24 Volts lightening system in line with EU directives( SA- BA brand).

**KING PIN:** Flanged kingpin to be removed by 2" bolt in line with EU norms.

**LANDING GEAR**

Mechanic gears (feet), which are double revolution and each has a capacity of bearing 24 tons..

**TYRES AND RIMS :** 6+1 tires and rims sized 385/65 R 22,5 BRIDGESTONE.

**PAINT :** Double layer epoxy primer after sanding process, double layer full acrylic oven drying.

### STANDARD ACCESSORIES

Tool cabinet	1 UNIT
Wheel chock	1 UNIT
FRP Mudguards	6 UNIT
Side protectors	1 UNIT
Water tank	1 UNIT
Fire extinguisher cabinet	1 UNIT
Spare tire space	1 UNIT
Lug wrench	1 UNIT

### OPTIONALS

JOST Landing gear
JOST King-pin
MICHELIN Tyres
Aluminium rims
Smartboard ( Wabco)
Non- standard RAL code for customer demands

**1FD**  
AUTOMOTIVE INDUSTRY



**V TYPE SILO TRAILER**

**LIGHT, AESTHETIC, STEEL**



## TECHNICAL SPECIFICATIONS V TYPE SILO TRAILER

**BODY :** Production range between 25-60 m<sup>3</sup> . ST quality , high resistance steel is using for body forming. Welded Manufacturing Quality Condition Standard approved manufacturing. V type unloading from bottom working pressure is 2 bar, test pressure is 3 bar.

**CHASSIS :** Semi trailer chassis. Production is made according to EEC standards.

### SUSPENSIONS AND AXLES

All of them having a folding top suspensions and parabolic double layered Z type scissors which are AKTAS brand . 3 axles each with 9 tons capacity with domestic or imported drum or disc brake. As a local axles SERTEL brand is chosen, for imported brand both BPW or SAF can be chosen.

**BRAKE SYSTEM :** Double-circuit braking system in line with EU directives. WABCO EBS and RSS system with 2S2M electronic anti-blockage system. Emergency stop and ramp valve.

**ELECTRICAL SYSTEM :** 7 24 Volts lightning system in line with EU directives( SA- BA brand).

**LANDING GEAR:** Mechanic gears (feet), which are double revolution and each has a capacity of bearing 24 tons.

**KING PIN :** Flanged kingpin to be removed by 2" bolt in line with EU norms

**TYRES AND RIMS :** 6+1 tires and rims sized 385/65 R 22,5 BRIDGESTONE.

**FILLING SYSTEM :** Upper Filling with Manhole Cover

**DISCHARGE SYSTEM :** It has been designed on the Body "V" shaped with the help of appointed vibration hose into. System pressure of 2 bar at the bottom 4 " ball valve by the help of vibrated hoses into the body . Discharging time with the opening of the ball valve is 20-25 min .

**PAINT:** Double layer epoxy primer after sanding process, double layer full acrylic oven drying.

### STANDARD ACCESSORIES

Tool cabinet	1 UNIT
Wheel chock	1 UNIT
FRP Mudguards	6 UNITS
Side protectors	2 UNIT
Drain Hose ( 4" / 6 m)	1 UNIT
Water tank	1 UNIT
Fire extinguisher cabinet	1 UNIT
Spare tire space	1 UNIT
3 bar resistant discharge valve	1 UNIT
Air pressure gauge	1 UNIT
Rear ladder	1 UNIT
	1 UNIT

### OPTIONALS

JOST landing gear
JOST King-pin
MICHELIN Tyres
Aluminium rims
Smartboard ( Wabco)
Non- standard RAL code for customer demands
Middle axle lifting system
Pneumatic folding top walking platform : 1 UNIT
Electric piston compressor with 3 head : 1 UNIT

**1FD**  
AUTOMOTIVE INDUSTRY



**TIPPER SILO TRAILER**

**LIGHT, AESTHETIC, STEEL**



## TECHNICAL SPECIFICATIONS TIPPER SILO TRAILER

**BODY :** Production range between 25-50 m<sup>3</sup> . ST quality , high resistance steel is using for body forming. Welded Manufacturing Quality Condition Standard approved manufacturing. Pipe type body shape, unloading from bottom working pressure is 2 bar, test pressure is 3 bar.

**CHASSIS :** Semi trailer chassis. Production is made according to EEC standards.

**SUSPENSIONS AND AXLES :** All of them having a folding top suspensions and parabolic double layered Z type scissors which are AKTAS brand . 3 axles each with 9 tons capacity with domestic or imported drum or disc brake. As a local axles SERTEL brand is choosen, for imported brand both BPW or SAF can be choosen.

**BRAKE SYSTEM :** Double-circuit braking system in line with EU directives. WABCO EBS and RSS system with 2S2M electronic anti-blockage system. Emergency stop and ramp valve.

**ELECTRICAL SYSTEM:** 7 24 Volts lightening system in line with EU directives( SA- BA brand).

**LANDING GEAR :** Mechanic gears (feet), which are double revolution and each has a capacity of bearing 24 tons.

**KING PIN :** Flanged kingpin to be removed by 2" bolt in line with EU norms

**TYRES AND RIMS :** 6+1 tires and rims sized 385/65 R 22,5 BRIDGESTONE.

**FILLING SYSTEM :** Upper Filling with Manhole Cover

**DISCHARGE SYSTEM :** Tipper is lifted up to 45 degrees angle by the help of 5 staged hydraulic lift. System pressure of 2 bar air send into the trailer and at the bottom 4 " ball valve is open. Discharging time with the opening of the ball valve is 35-40 min .

**PAINT :** Double layer epoxy primer after sanding process, double layer full acrylic oven drying.

### STANDARD ACCESSORIES

Tool cabinet	1 UNIT
Wheel chock	1 UNIT
FRP Mudguards	6 UNITS
Side protectors	1 UNIT
Drain Hose ( 4" / 6 m)	1 UNIT
Water tank	1 UNIT
Fire extinguisher cabinet	1 UNIT
Spare tire space	1 UNIT
3 bar resistant discharge valve	1 UNIT
Air pressure gauge	1 UNIT
Rear ladder	

### OPTIONALS

JOST landing gear
JOST King-pin
MICHELIN Tyres
Aluminium rims
Smartboard ( Wabco)
Non- standard RAL code for customer demands
Middle axle lifting system
Pneumatic folding top walking platform : 1 unit

**1FD**  
AUTOMOTIVE INDUSTRY



**MILLENIUM SILO TRAILER LIGHT, AESTHETIC, STEEL**





## TECHNICAL SPECIFICATIONS MILLENIUM SILO TRAILER

**BODY :** Production range between 25-60 m<sup>3</sup> . ST quality , high resistance steel is using for body forming. Welded Manufacturing Quality Condition Standard approved manufacturing. W type body shape, unloading from bottom working pressure is 2 bar, test pressure is 3 bar.

**CHASSIS :** Semi trailer chassis. Production is made according to EEC standards.

**SUSPENSIONS AND AXLES :** All of them having a folding top suspensions and parabolic double layered Z type scissors which are AKTAS brand . 3 axles each with 9 tons capacity with domestic or imported drum or disc brake. As a local axles SERTEL brand is choosen, for imported brand both BPW or SAF can be choosen.

**BRAKE SYSTEM :** Double-circuit braking system in line with EU directives. WABCO EBS and RSS system with 2S2M electronic anti-blockage system. Emergency stop and ramp valve.

**ELECTRICAL SYSTEM :** 7 24 Volts lightening system in line with EU directives( SA- BA brand).

**LANDING GEAR :** Mechanic gears (feet), which are double revolution and each has a capacity of bearing 24 tons.

**KING PIN :** Flanged kingpin to be removed by 2" bolt in line with EU norms

**TYRES AND RIMS :** 6+1 tires and rims sized 385/65 R 22,5 BRIDGESTONE.

**FILLING SYSTEM :** Upper Filling with Manhole Cover

**DISCHARGE SYSTEM :** It has W type conic discharging system, mounted on the body. System pressure of 2 bar air send into the trailer and at the bottom 4 " ball valve is open. Discharging time approx. 25-30 min .

**PAINT :** Double layer epoxy primer after sanding process, double layer full acrylic oven drying.

### STANDARD ACCESSORIES

Tool cabinet	1 UNIT
Wheel chock	1 UNIT
FRP Mudguards	6 UNIT
Side protectors	1 UNIT
Drain Hose ( 4" / 6 m)	1 UNIT
Water tank	1 UNIT
Fire extinguisher cabinet	1 UNIT
Spare fire space	1 UNIT
3 bar resistant discharge valve	1 UNIT
Air pressure gauge	1 UNIT
Rear ladder	1 UNIT

### OPTIONALS

JOST landing gear
JOST King-pin
MICHELIN Tyres
Aluminium rims
Smartboard ( Wabco)
Non- standard RAL code for customer demands
Middle axle lifting system
Pneumatic folding top walking platform : 1 unit

**1FD**  
AUTOMOTIV INDUSTRY



**TRANSMIXERS**

**LIGHT, AESTHETIC, STEEL**



## TECHNICAL SPECIFICATIONS TRANSMIXERS

**BODY :** Production range between 25-60 m<sup>3</sup> . ST quality , high resistance steel is using for body forming. Welded Manufacturing Quality Condition Standard approved manufacturing. V type body shape, unloading from bottom working pressure is 2 bar, test pressure is 3 bar.

**CHASSIS :** Monoblock type chassis. Production is made according to EEC standards.

**SUSPENSIONS AND AXLES :** All of them having a folding top suspensions and parabolic double layered Z type scissors which are AKTAS brand . 3 axles each with 9 tons capacity with domestic or imported drum or disc brake. As a local axles SERTEL brand is choosen, for imported brand both BPW or SAF can be choosen.

**BRAKE SYSTEM :** Double-circuit braking system in line with EU directives. WABCO EBS and RSS system with 2S2M electronic anti-blockage system. Emergency stop and ramp valve.

**ELECTRICAL SYSTEM :** 7 24 Volts lightning system in line with EU directives( SA- BA brand).

**LANDING GEAR :** Mechanic gears (feet), which are double revolution and each has a capacity of bearing 24 tons. KING PIN: Flanged kingpin to be removed by 2" bolt in line with EU norms

**TYRES AND RIMS :** 6+1 tires and rims sized 385/65 R 22,5 BRIDGESTONE.

**FILLING SYSTEM:** Upper Filling with Manhole Cover

**DISCHARGE SYSTEM :** It has V type conic discharging system, mounted on the body. System pressure of 2 bar air send into the trailer and at the bottom 4 " ball valve is open. Discharging time approx. 20-25 min .

**PAINT :** Double layer epoxy primer after sanding process, double layer full acrylic oven drying.

### STANDARD ACCESSORIES

Tool cabinet	1 UNIT
Wheel chock	1 UNIT
FRP Mudguards	6 UNIT
Side protectors	1 UNIT
Drain Hose ( 4" / 6 m)	1 UNIT
Water tank	1 UNIT
Fire extinguisher cabinet	1 UNIT
Spare tire space	1 UNIT
3 bar resistant discharge valve	1 UNIT
Air pressure gauge	1 UNIT
Rear ladder	

### OPTIONALS

JOST landing gear
JOST King-pin
MICHELIN Tyres
Aluminium rims
Smartboard ( Wabco)
Non- standard RAL code for customer demands
Middle axle lifting system
Pneumatic folding top walking platform : 1 unit



## TECHNICAL SPECS FOR CURTAIN SIDE SEMI TRAILER

**CHASSIS:** It is manufactured with ST-52 5mm by using inert-gas welding machinery from/out of high durable steel as cross sectional "I" Overloadings had been taken into consideration at the durability calculations.

**AXLE:** 3x12 ton air suspension axles, Turkish brand and donated with an automatic adjusting break lever, from axle liftable

**AIR SUSPENSION:** It consists of of raising and lowering and highness adjusting system; parabolic z trusses and shock absorber elements which limiting overloading axle movement (Turkish brand).

**BRAKE:** Brake is designed in accordance with the European standards. WABCO or Knorr products are used as Equipments. Automatic break ratchets, break ventil, break bellows (30cm cylinder), break lining pads (429 x 200 mm.) and the axle brakes are equipped with ABS system. There are two replaceable and protected break sockets in front of the trailer.

**LANDING GEAR:** Mechanic gears (feet), which are double revolution and each has a capacity of bearing 25 tons (Turkish brand).

**TYRE :** 6 ea, 385/65 R22,5 BRIDGESTONE or LASSA

**RIMS :** 11,75\*22.5 Jantsa brand 6

**KING-PIN :** 2" Slit is made of forged steel (42 Cr Mo 4) which is coherent to 2"SAE/DIN" norms and durable against high level stretching and breakings. It can be replaceable via screw connections (Turkish brand).





**FLOOR COVERING :** Generally preferred for transportation, long lasting, 30mm plywood and cheuqere plate

**ELECTRIC SYSTEM :** We have got 24 V electrical installment which is designed according to EU rules

There are stop lambs with many parts which consist of reverse light and fog light on the trailer. There are 2 electrical sockets (24N/24S) and 1 ABS socket.

**ROOF :** SESAM brand, sides and roof are acting indepently. All system are set up on steell rails with section "T". The length of the rails can be adjust according to the demands of the costumers.

**DYE (paint) :** All the surfaces are cleaned under high pressure with water and bonder chemical liquid. Then it is dyed with one coat of epoxy die, and a last coat of acrylic die. It is very durable against chemical effectiveness. As desired, colours can be chosen from the RAL codes.

**CURTAINS :** 12\*12 cross panama – German or Belgium made

900gr/m2 weight

High shiness in dual side

-30 +70 temperature durability

PVC

5 Year warranty

**SIDE WALLS :** IT IS SO EASY TO LOAD FROM SIDEWAYS WITH SLIDING CHETAH.

**FRONT PANEL :** IT MAKES AS OMEGA FIGURE IN IRONING PRESS.

**ACCESSORIES:**

1 PC BUMPER

1 PLASTIC WATER TANK

1 PC SPARE TYRE BOX PROTECTED WITH ALUMINIUM PANELS

1 PC FIRE FIGHTING BOX

1 unit tool box

Forklift chock on the lids

Aliminium ladder inside mounted on rear lid

Spanset connections on the floors

**WARRANTY :** 1 Year warranty for spare parts. 1 year or 100.000km(whatever ends first).

**DIMENSIONS :**

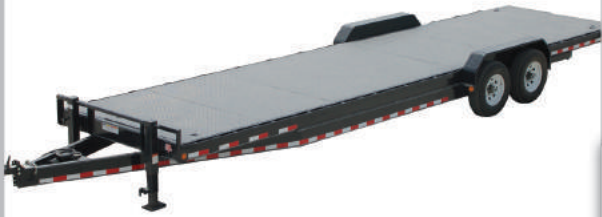
Inside Height: 2.90

Overall Lenght: 13.60

Outside Widh: 2.55

**Note :** All can be changed and made customized according to customer demand

**1FD**  
AUTOMOTIV INDUSTRY



**FLATBED SPECS - 3 AXLE**

**LIGHT, AESTHETIC, STEEL**

## TECHNICAL SPECIFICATIONS OF FLATBED 3 AXLE

**Flatbed Capacity (Pay Load) :** 40 tons.

**Size :** L 1200 x W 250 or L 1360 x W 250.

**Chassis :** 40 x 18 I Beam, It is manufactured by using inert-gas welding machinery from/out of high durable steel as cross sectional "I" Overloadings had been taken into consideration at the durability calculations.

**Side Rail :** 14 cm U- Channel.

**Cross Members :** 10cm IPE.

**Floor :** 3 mm chequered plate.

**Axles :** Turkish brand 3x12 tons air suspension or mechanical suspension and donated with an automatic adjusting break lever and with front lifting system.

**Air Suspension :** It consists of of raising and lowering and highness adjusting system; parabolic z trusses and shock absorber elements which limiting overloading axle movement.

**Landing Gear :** Mechanical operation telescopic with lifting capacity 25 ton.

**Air lines :** Complete 2 Air line set with all necessary, according to world regulations (Turkish brand).

**Electric Systems :** 24 volts according to international systems, providing flatbed with back and side lights.

**Brake System :** According to European Standards, double stages automatic adjustable valves (Turkish brand-break system).

**Paint (Color) :** All components are blasted with metal granules then painted of high quality paint.

**Tyres :** 6ea tubeless tyres with the dimensions 385 /65 R 22.5 .

**Accessories :** 1 water tank,1 tool box, 1 meal box, 1 fire extinguisher box, single or double spare tyre box.



**TFD**  
AUTOMOTIV INDUSTRY



**LOWBED 60 TON**

**LIGHT, AESTHETIC, STEEL**



## TECHNICAL SPECS FOR 60-70 TON CAPACITY LOWBED

**Lowbed Capacity (Pay Load) :** 60 - 70 tons

**Total Length of lowbed :** 16.00 m

**Length of loading Surface :** 10.50 m

**Length of neck :** 3.70 m

**Width of lowbed :** 3.25 m

**Height :** 1.20 m

**Width of internal Chassis :** 0.50 m (Mother chassis)

**Width of external chassis :** 0.36 m (Side Chassis)

**Ramps :** works with air system

**Mother chassis :** IPN 500 ST 44-2

**King pin :** 3.5 inch

**Floor of Lowbed :** Sugar plate 5/6 mm and 8mm steel plates with 40x10mm flat bars welded on.

**Axle :** 3 x16 ton heavy duty axles

**Tyres :** 12 ea tyres Pirelli with rims

**Tyre Size :** 315 80 R 22.5

**Landing Gear :** Mechanical operation telescopic, capacity 50 tons,

**Brakes :** Two line air brake systems, the brakes are air actuated with load sensitive device. Parking brake with manual operation and spring brake

**Electric Systems :** - 24 volt electrical outfit according to iso standard - red reflectors one each sides with 3 side markers - with all wares and harnesses of best quality , long life and according to international regulations combined rear lines including stop light , direction indicator(doubles)

**Paint (Colour) :** All components are to be blasted with metal granules then painted 2 layer of high quality paint (Orange color)

**Warranty :** One year against manufacturing and workmanship defects.





**LPG TANKER SPECS**

**LIGHT, AESTHETIC, STEEL**



## LPG TANKER SEMI TRAILER SPECS

**General:** LPG tanker 45 m3 capacity.

**Tank: Type:** Cylindrical, for LPG (Low pressure gas) transport.

**Bumbles :** Elliptical

**Capacity :** 45 m3

**Tank OD :** 2.350 mm

**Tank Length :** 10.500 mm

**Material :** P 355 GH (A quality steel having low carbon ratio) 10 mm thickness.

**Material :** Suitable for the EN 10028 and EN 10204 certificated by 3.1.c under the quality of P 355

**Design Pressure :** 17 atu

**Test pressure:** 26.25 atu

**Design code :** BS-EN 13445

**Working Temperature:** Min -10degC , Max +50 degC

**Penetration :** On the corner welding

**Class control :** GERMANISCHER Lloyd (Project, material & hydrostatic test)

**Plates:** Plates used in producing the tank are according to DIN EN 10028- Part 2-1993 and will have C type certificate DIN 50049/3.1

**Paint Work :** Surface cleaned under high pressure with water and bonder chemical liquid (Sand blasting) . One coat of epoxy paint and two (2) final coats of acrylic paint.

**Semi Trailer Chassis :** Mono block ST52 steel, high density with I cross sectional

**Running Group:** Axle: 2 axles of 14 ton each, TUV certified type

**Suspension:** Mechanical type

**Kingpin:** 2" or 3.5" as requested

**Brake system :** 2 line air breake system.

**Landing gear :** Mechanically operated , the static capacity will be of 50 tons and the dynamic one of 24 tons.

**Tires & Rims:** 8+1 315 80 R 22.5 Bridgestone or Pirelli brand with rims.

Double mounted tires and other tires size are available on request.

### STANDARD EQUIPMENT

1	Rotary Level Indicator	1
2	Safety relief valve	2
3	Hidraulic valve 2"	1
4	Hidraulic Valve 3"	1
5	Hidraulic operator	1
6	Spherical valve 2"	2
7	Glycerin Manometer	1
8	Glycerin Thermometer	1

### Electrical:

- 24 V Light according to EEC regulation

- 7 pin plug

- Rear brake and fog lights

- Side reflectors

### Accessories:

Reinforced rear bumper

Spare wheel holder & spare tire

Tool box

Water tank

### Quality and Guaranty

-All our LPG tanks are build under the certificate of TUV , ISO 9001 and has the all necessary working pressure certificates .

-All of our trailers under 1 year quaranty for any misconstruction .

-All our materials that we use such as : axle , chassis , brakes , landing gears are certificated by ISO 9001 and TUV .

## YAYLI TABAN DORSE KRIKOSU MECHANICAL LANDING GEAR

### TEKNİK ÖZELLİKLER | TECHNICAL INFORMATION

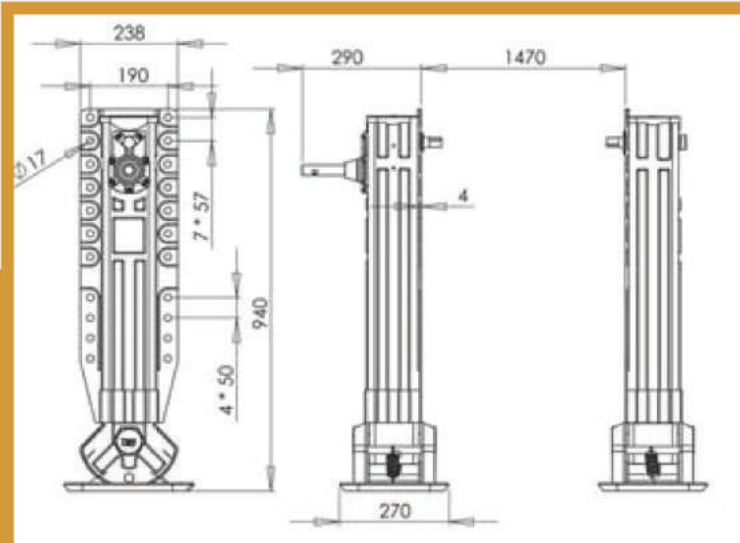
<b>Kaldırma Kapasitesi</b> ▪ Lifting Capacity	<b>25 TON</b>
<b>Statik Yükleme</b> ▪ Static Load	<b>50 TON</b>
<b>Bir Takımın Ağırlığı</b> ▪ Weight of Set	<b>90 KG</b>

**Kaldırma Kolunun Bir Tur Çevrilmesi ile Aldığı Yol**  
Taken by rearrangement of the lifting arm round way

<b>Ağır Devir</b> ▪ Heavy Speed	<b>1.0 mm</b>
<b>Seri Devir</b> ▪ Light Speed	<b>10.6 mm</b>

**Kolu Çevirmek için Harcanan Güç**  
Power Consumption

<b>Ağır Devirde</b> ▪ Heavy Speed	<b>17 KG</b>
<b>Seri Devirde</b> ▪ Light Speed	<b>35 KG</b>



## YAYLI TABAN DORSE KRIKOSU MECHANICAL LANDING GEAR

TEKNİK ÖZELLİKLER | *TECNICAL INFORMATION*



<b>Kaldırma Kapasitesi</b> ▪ Lifting Capacity	<b>25 TON</b>
<b>Statik Yükleme</b> ▪ Static Load	<b>50 TON</b>
<b>Bir Takımın Ağırlığı</b> ▪ Weight of Set	<b>100 KG</b>

**Kaldırma Kolunun Bir Tur Çevrilmesi ile Aldığı Yol**  
Taken by rearrangement of the lifting arm round way

<b>Ağır Devir</b> ▪ Heavy Speed	<b>1.0 mm</b>
<b>Seri Devir</b> ▪ Light Speed	<b>10.6 mm</b>

**Kolu Çevirmek için Harcanan Güç**  
Power Consumption

<b>Ağır Devirde</b> ▪ Heavy Speed	<b>17 KG</b>
<b>Seri Devirde</b> ▪ Light Speed	<b>35 KG</b>

## YAYLI TABAN DORSE KRIKOSU MECHANICAL LANDING GEAR

### TEKNİK ÖZELLİKLER | TECHNICAL INFORMATION

<b>Kaldırma Kapasitesi</b> ▪ Lifting Capacity	<b>25 TON</b>
<b>Statik Yükleme</b> ▪ Static Load	<b>50 TON</b>
<b>Bir Takımın Ağırlığı</b> ▪ Weight of Set	<b>100 KG</b>

#### Kaldırma Kolunun Bir Tur Çevrilmesi ile Aldığı Yol Taken by rearrangement of the lifting arm round way

<b>Ağır Devir</b> ▪ Heavy Speed	<b>1.0 mm</b>
<b>Seri Devir</b> ▪ Light Speed	<b>10.6 mm</b>

#### Kolu Çevirmek için Harcanan Güç Power Consumption

<b>Ağır Devirde</b> ▪ Heavy Speed	<b>17 KG</b>
<b>Seri Devirde</b> ▪ Light Speed	<b>35 KG</b>



## YAYLI TABAN DORSE KRIKOSU MECHANICAL LANDING GEAR

### TEKNİK ÖZELLİKLER | TECHNICAL INFORMATION



<b>Kaldırma Kapasitesi</b> ▪ Lifting Capacity	<b>12 TON</b>
<b>Statik Yükleme</b> ▪ Static Load	<b>24 TON</b>
<b>Bir Takımın Ağırlığı</b> ▪ Weight of Set	<b>40 KG</b>

#### Kaldırma Kolunun Bir Tur Çevrilmesi ile Aldığı Yol Taken by rearrangement of the lifting arm round way

<b>Seri Devir</b> ▪ Light Speed	<b>7.5 mm</b>
---------------------------------	---------------

#### Kolu Çevirmek için Harcanan Güç Power Consumption

<b>Seri Devirde</b> ▪ Light Speed	<b>30 KG</b>
-----------------------------------	--------------

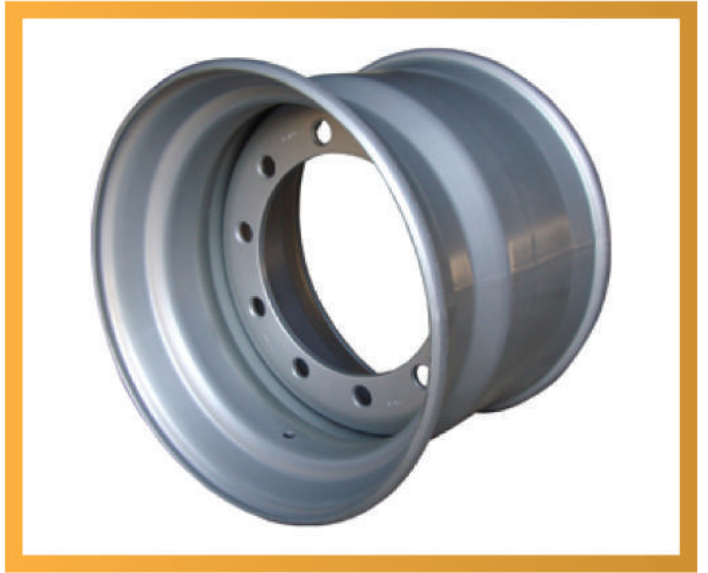
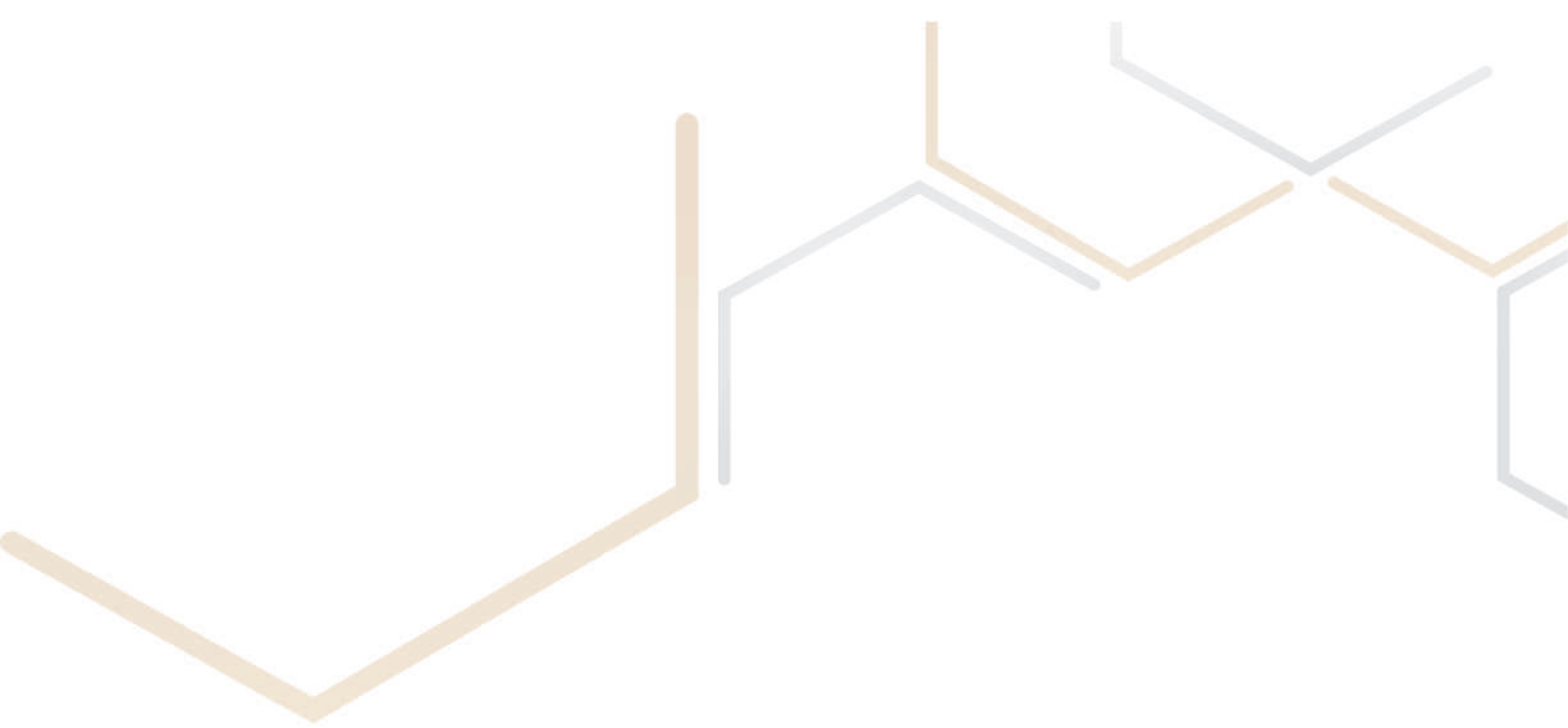


# RIMS

Rim Sizes	Tire Size	TFD Code	Porya Çapı (mm)	Bijon Eksen Çapı (mm)	Bijon Tipi	Bijon Sayısı	Ofset (mm)	Taşıma Kapasitesi 100 km/s
22,5x11,75	15R22,5	74117599	281	335	Ø26mm	10	Inset 135	4500
		74117665	281	335	Ø26mm	20	Inset 120	4500
	365/70R22,5	74117667	281	335	Ø26mm	20	0	4500
	385/65R22,5	74117668	281	335	Ø26mm	10	Inset 50	4500
22,5x9,00	12R22,5	74900249	281	335	Ø26mm	10	175	4000
	13R22,5315 /70R 22,5	74900250	281	335	B3	10	175	4000
		74900255	221	*285*	B5	8	175	4000
	295/70R22,5	74900229	220	285.75	Ø26	10	178	4090
	295/75R22,5	74900251	221.5	285.75	B5	10	178	4000
	315/75R22,5	74900275	220	285.75	Ø28,5	10	Inset 133,5	4550
315/80R22,5	74900295	220	285.75	Ø26	10	Inset 120	4550	



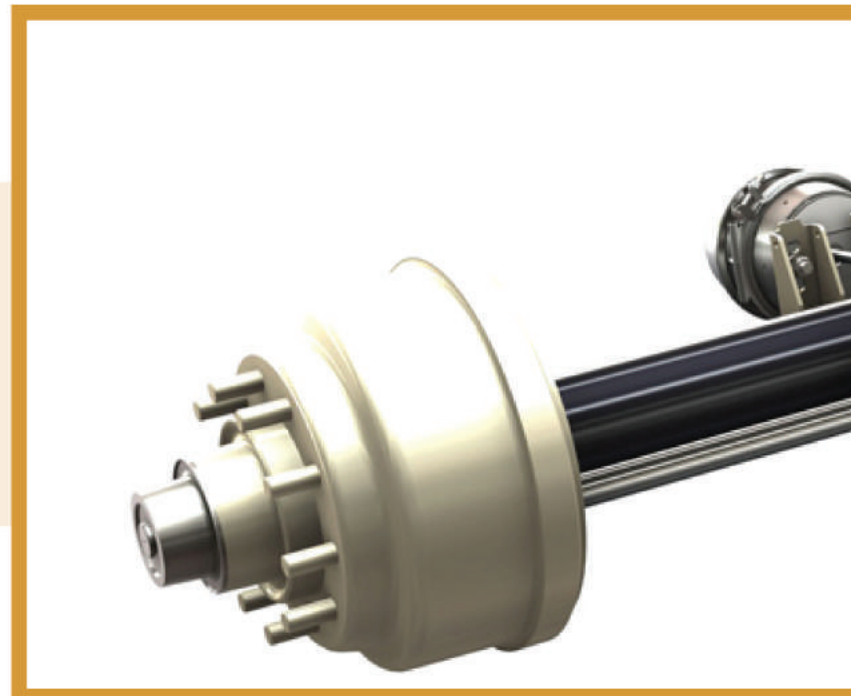




## MECHANICAL SUSPENSION KIT



TFD CODE	SET TYPE	SPUR	TRACK	LEAF CENTER	CHAMBERS	BEARING	BEAM	WEIGHT
X	12 TON TRIDEM	2490 mm	1840 mm	950 mm	335 mm	4500	4500	4500
X	14 TON TRIDEM	2490 mm	1840 mm	950 mm	335 mm	4500	4500	4500
X	16 TON TRIDEM	2490 mm	1840 mm	950 mm	335 mm	4500	4500	4500



# TFD AXLES



## BOGIE PLATFORM MECHANICAL SUSPENSION SET



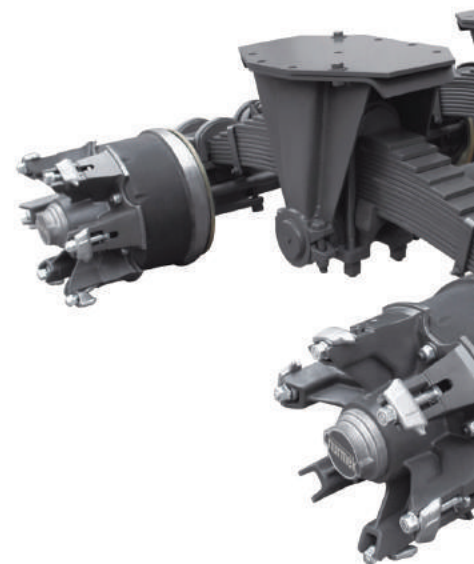
TFD CODE	SET TYPE	SPUR	TRACK	LEAF CENTER	CHAMBERS	BEARING	BEAM	WEIGHT
X	12 TON TRIDEM	2490 mm	1840 mm	900 mm	360 mm	33213-33118	4500	1900 KG
X	14 TON TRIDEM	2490 mm	1840 mm	900 mm	360 mm	33019-33215	4500	1900 KG
X	16 TON TRIDEM	2490 mm	1840 mm	900 mm	360 mm	32314-32222	4500	1950 KG



## HEAVY TYPE DRUM AXLE KIT



TFD CODE	AXLE TYPE	EXTERIOR WIDTH	TRACK WIDTH	SHEAR CENTER	INTERMEDIATE HOUSING	BEARING TYPE	BELLOWS DISTANCE	WEIGHT
X	12 TON PILOT	2470 mm	2080 mm	1300 mm	140*12 mm	33213-33118	600 mm	626 KG
X	12 TON DOUBLE TYRE	2490 mm	1840 mm	900 mm	140*14 mm	33213-33118	360 mm	626 KG
X	14 TON DOUBLE TYRE	2490 mm	1840 mm	900 mm	140*14 mm	33019-33215	360 mm	626 KG
X	16 TON DOUBLE TYRE	2490 mm	1840 mm	900 mm	140*14 mm	32314-32222	360 mm	726 KG

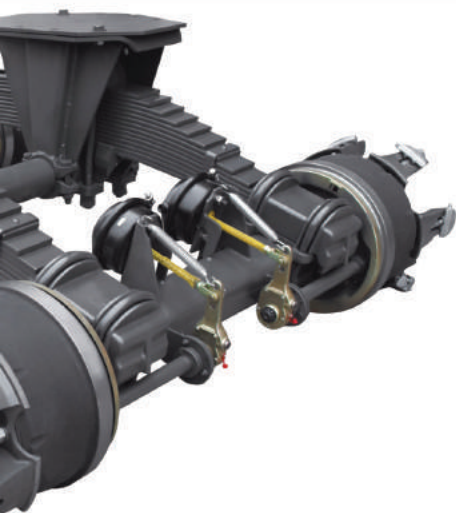


# TFD AXLES

## DRUM AXLE KIT



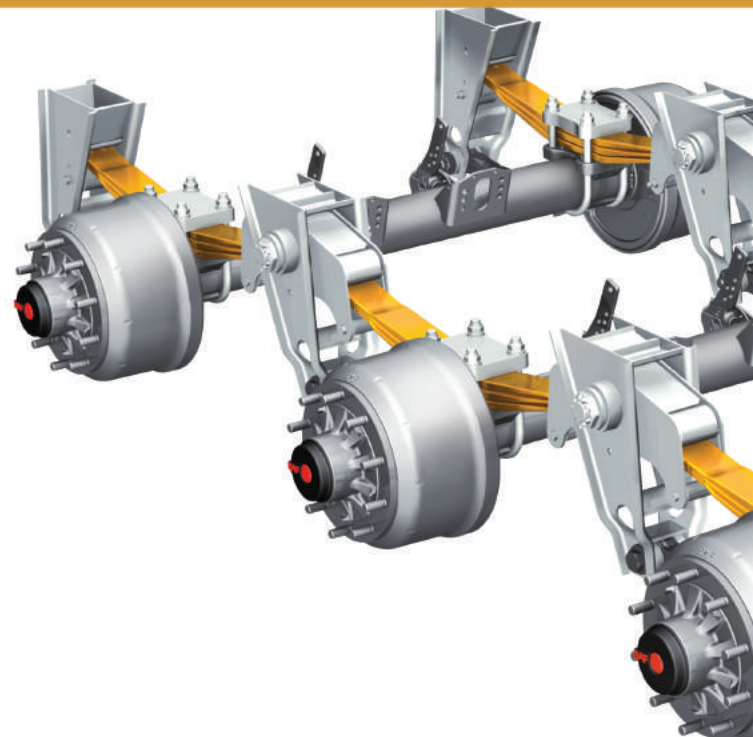
TFD CODE	SET TYPE	SPUR	TRACK	LEAF CENTER	CHAMBERS	BEARING	BEAM	WEIGHT
X	12TON PILOT	2470 mm	2080 mm	1300 mm	600 mm	33213-33118	140*14MM	530 KG
X	12 TON DOUBLE TYRE	2490 mm	1840 mm	900 mm	360 mm	33213-33118	140*14MM	570 KG



## JUMBO AXLE AIR SUSPENSION SET



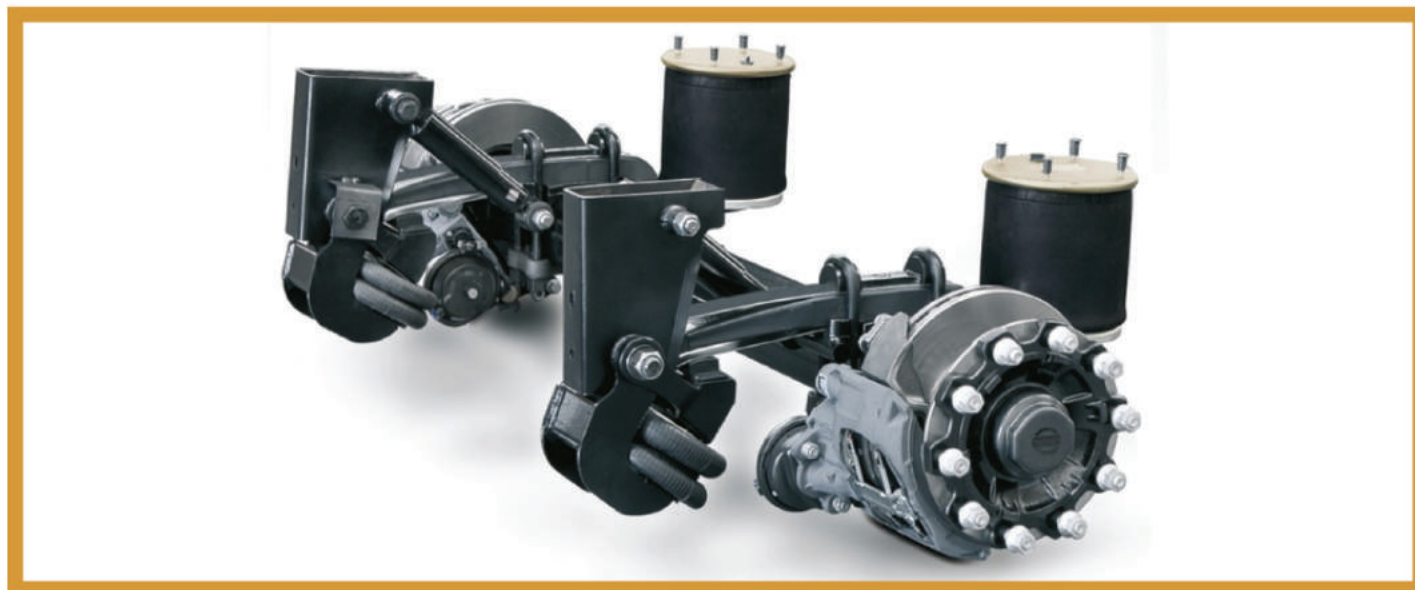
TFD CODE	SET TYPE	BRAKE DIA.	TRACK	LEAF CENTER	CHAMBERS	BEARING	WEIGHT
X	12TON PILOT	330*200 mm	1840 mm	900 mm	360 mm	33213-33118	512 KG
X	12 TON DOUBLE TYRE	330*200 mm	1840 mm	900 mm	360 mm	33213-33118	522 KG



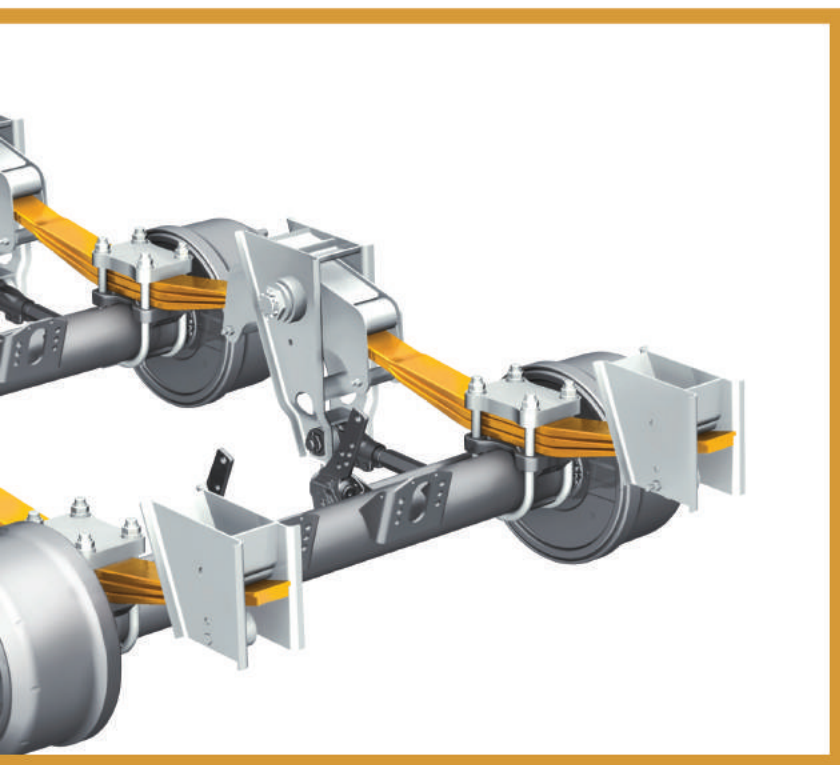
# TFD AXLES



## DISC AXLE SET



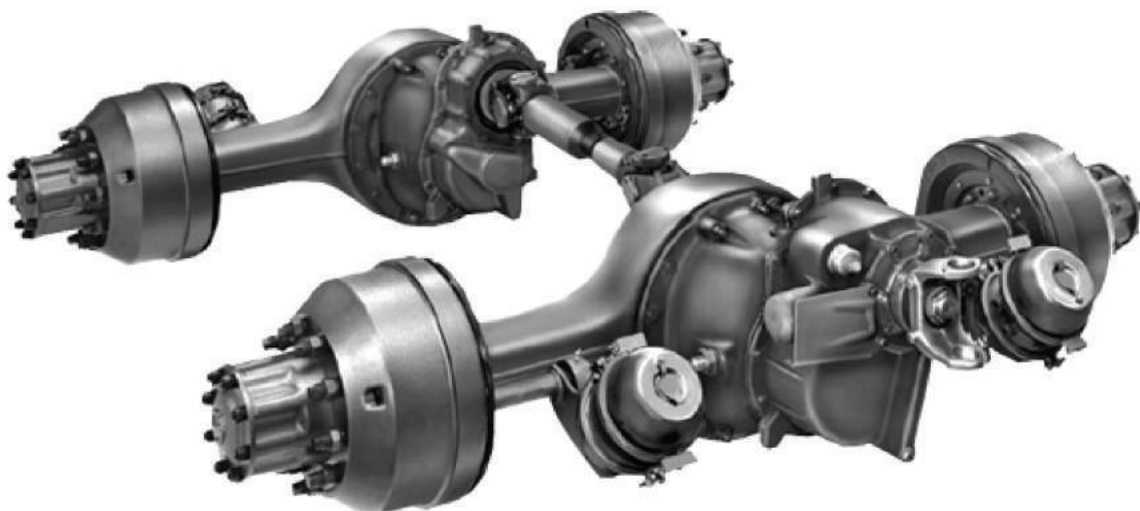
TFD CODE	AXLE TYPE	SPUR	TRACK	LEAF CENTER	BEARING	WEIGHT
X	12 TON	2430 mm	2290 mm	1300 mm	33213-33118	560 KG



## DRUM BRAKE AXLE



TFD CODE	AXLE TYPE	SPUR	TRACK	CHAMBERS	BEARING	BEAM	WEIGHT
X	12 TON PILOT	2470 mm	330*200 mm	600 mm	33213-33118	140*14 mm	360 KG
X	12 TON DOUBLE TYRE	2490 mm	330*200 mm	360 mm	33213-33118	140*14 mm	400 KG
X	14 TON DOUBLE TYRE	2490 mm	330*200 mm	360 mm	33019-33215	140*14 mm	400 KG
X	16 TON DOUBLE TYRE	2490 mm	330*200 mm	360 mm	32314-32222	140*14 mm	450 KG



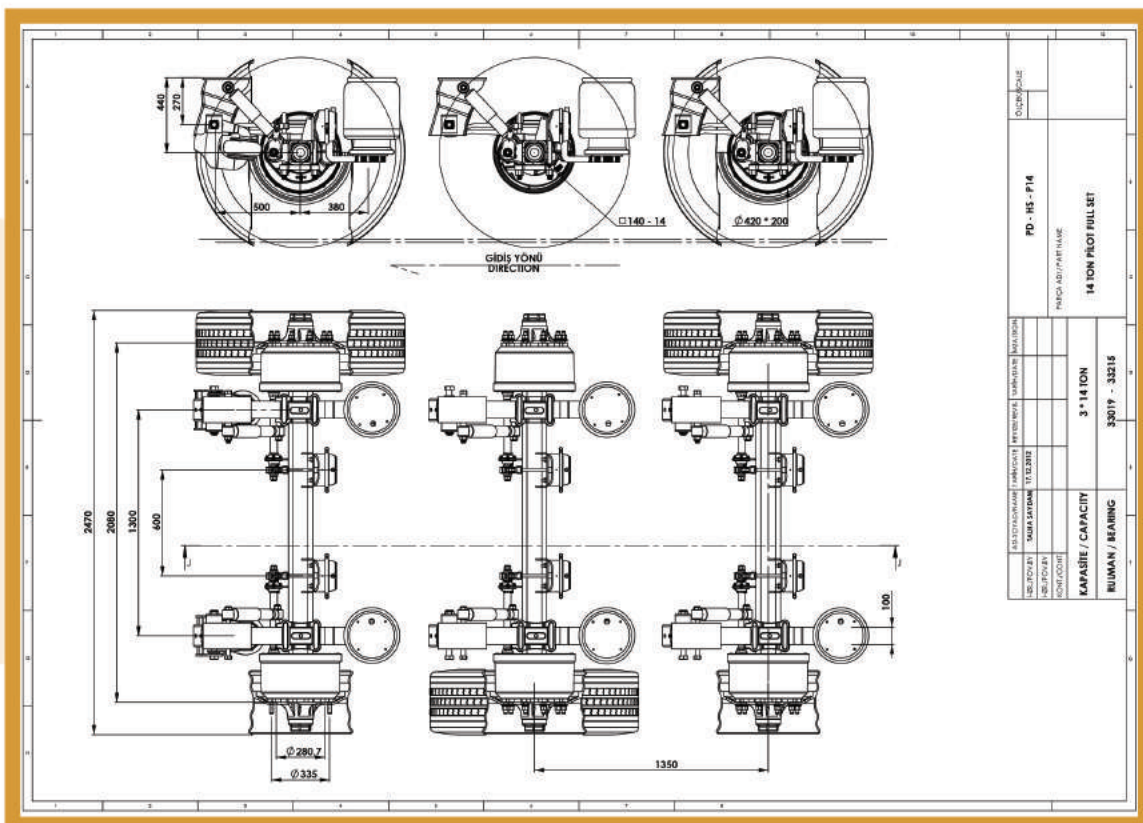


# TFD AXLES

## DISC BRAKE AXLE



TFD CODE	AXLE TYPE	SPUR	TRACK	BEARING	BEAM	WEIGHT
X	12 TON	2430 mm	2290 mm	33213-33118	140*14MM	400 KG





**GALVANIZED WATER TANK**  
25 - 35-60-70-90-200-250 LT



**CHROME WATER TANK**  
25 - 35-60-70-90-200-250 LT



**STEEL TOOL CABINET**



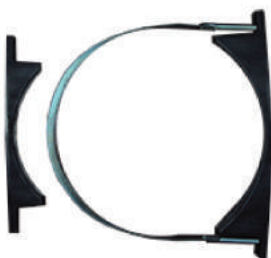
**PLASTIC WATER TANK**  
30LT - 50LT



**PLASTIC TOOL BOX**  
50S-60S-80S



**WATER TANK CLAMP**



**WATER TANK CLAMP**



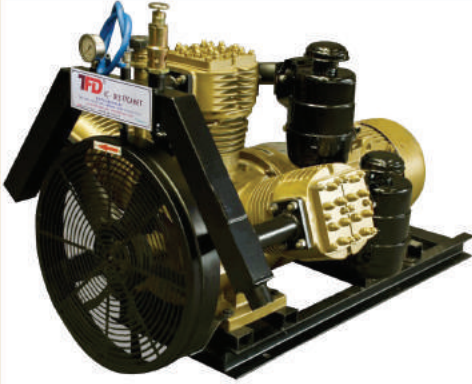
**WHEEL CHOCK**



**FIRE CABINET**

# COMPRESSOR

## T160 3 ELECTRIC COMPRESSOR



**DISPLACEMENT : 7200 LT/MIN**

**PRESSURE : 2,5 - 3 BAR**

**CYLINDERS : 3 X 160 MM**

**PISTON STROKE : 80 MM**

**COOLING : AIR COOLANT ELECTRIC MOTOR 18.5 KW 380V-50HZ 1500 RPM**

**ENGINE/MOTOR : DEUTZ F4L9124 CYLINDER 80 HP DIESEL ENGINE**

**DISPLACEMENT : 10200 LT/MIN**

**PRESSURE : 2,5 - 3 BAR**

**CYLINDERS : 2 X 220 MM**

**PISTON STROKE : 90 MM**

**ENGINE/MOTOR : DEUTZ F4L9124 CYLINDER 80 HP DIESEL ENGINE**

## A 220 - 2 DIESEL COMPRESSOR



## A 220 - 2 ELECTRIC COMPRESSOR



**DISPLACEMENT : 10200 LT/MIN**

**PRESSURE : 2,5 - 3 BAR**

**CYLINDERS : 2 X 220 MM**

**PISTON STROKE : 90 MM**

**ENGINE/MOTOR : 30 KW 1500 RPM ELECTRIC MOTOR**

## T 90 - 2 TANK COMPRESSOR



- Images products in the catalog are for information purposes. Image may vary from actual products.
- Kataloglarda ki ürün görselleri bilgi amaçlıdır. Fotoğraflar ve ürünler farklılık gösterebilir.

- Please contact us for any product you can not find in the catalog or your special order products .
- Kataloglarda bulamadığınız ürünler veya özel siparişleriniz için lütfen bizimle iletişime geçiniz.

info@tfdindustry.com



AUTOMOTIVE INDUSTRY

**TURKEY  
Hatay Branch**

+90 (326) 221 86 31  
+90 (326) 221 86 33

**TURKEY  
Istanbul Branch**

+90 (212) 549 97 25  
+90 (212) 549 97 26

**KSA Branch**

Dammam : +966 55 44 20 657  
Dammam : +966 1124 17 598

**KSA Branch**

Jeddah : +966 1262 15806  
Jeddah : +966 1262 52718

**KSA Branch**

Riyadh : +966 11 2702294  
Riyadh : +966 11 2417598

**DUBAI BRANCH**

+971 6 5439612  
+971 6 5439621